

General English: More Choice

Our flexible system gives the student the maximum amount of choice and flexibility. You can choose an exact programme tailored to your timetable needs, how intensive you want your course to be and even other interests you have.

Once you have chosen a time and how many hours you want to do per week, it's time to do your level test. Our test determines the best class for you and therefore which centre you will be studying in. Once you know your level, you can choose which additional modules you would like to do.

1 Choose how many hours a week

15 Hours

Core Course

20 Hours

Core Course (15 hrs) and 1 module of your choice (5 hrs)

25 Hours

Core Course (15 hrs) and 2 modules of your choice (10 hrs)

2 Choose your core course study time

Morning

8-11 9-12

Afternoon

11-2 12-3 2-5 3-6

3 Choose your 1 hour modules (see p. D)

Modules aim to give a boost to the individual student on aspects of English that needs extra help. For higher level students, a variety of subjects are available. Modules are available between 11am and 4pm.

4 Choose the Fast Track Course (see p. H)

It makes sense to start your stay in London with a 2 week or 4 week Intensive programme. With 8 students in a class you can fast track your English language learning.

The Daily 3 Hour Lesson

Our General English classes develop all areas of English language, including reading, writing, speaking and listening. Emphasis is placed on speaking, pronunciation and listening, making sure that students develop communicative skills quickly. Lessons include 10 minutes break per hour and are organised with a 20 minute break in the middle.

Text Books

Each class follows a text book and each student has to purchase his/her own text book.

The Malvern House Study Diary

Your progress will be discussed with you and your teacher during a one-to-one meeting every 3 weeks. The meeting will be recorded in your personal Progress Diary.

Yes, you can change

Our systems are designed for student flexibility. It is easy to change from one time to another, or from one course to another.

The Malvern House Certificate

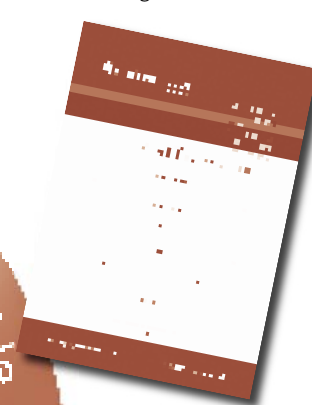
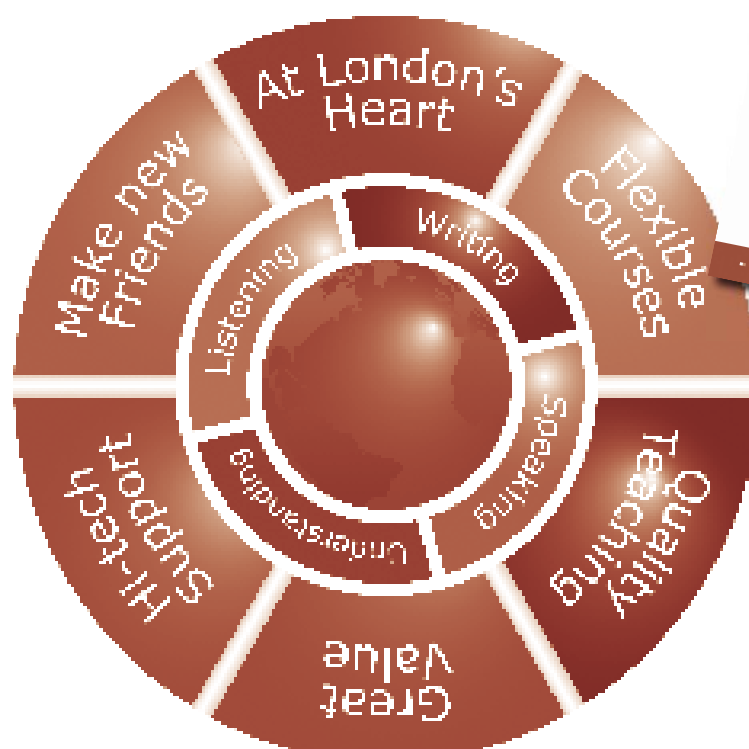
Each student will be awarded a certificate at the end of their course to indicate what level they have achieved and their grade.

A PROMISE

From
Caroline McKinnon
Academic Manager

To learn a language is of course hard work.

But I can promise that, whatever your level of English, whatever your nationality, you will within weeks see a noticeable increase in your English language skills and in your confidence. Furthermore I think you will enjoy your course.



Progress Level by Level

Qualified teachers will assess your progress

Number in a Class		
15 average 18 maximum		
Classes at		
8-11	9-12	11-2
12-3	2-5	3-6
Enrol any Monday		

What will I learn?

You will learn to speak, read, write and listen in English. Your vocabulary will increase and you will improve your fluency in everyday English.

What about home work?

The teacher will suggest some weekly home work and reading which you are expected to do in addition to your class hours. Teachers are advised to give homework 3 times a week.

Is my teacher properly qualified?

Yes, your teacher will be a university graduate and will be qualified with a minimum of CELTA or Trinity TESOL - teaching qualifications that are valid all over the world.

Which modules can I choose?

There is a wide choice and it depends on what you are interested in and your level of English. Modules are an opportunity to use your new language skills in new areas, or to improve specific skills.

“Moving up”

Says Deniz from Turkey

“After a month I found my class too easy. My teacher agreed and he arranged that I moved to a higher level class before the term ended”



Modules

Learn English Better - with the right module

You can choose additional modules to supplement your regular 3 hours tuition.

1. More fun, more variety and different teachers
2. Use your growing English on new subject matter, or choose to develop certain skills
3. Focus on your specific needs

A booster for your General English

- Verbal English Module**
If you are weak in expressing yourself in conversation this hour will help you. It focuses on listening speaking and pronunciation.
- Written Module**
If you need extra help on your grammar and written fluency this hour will help you. It will boost your reading and vocabulary.
- Duo Module**
This hour is for students who want improvement in both verbal and written English.

Towards passing a valuable Exam

- IELTS Preparation Module**
You'll learn how to embark on an IELTS Exam – the doorway to an academic course at a UK University.
- TOEFL Preparation Module**
It's the first step to passing a TOEFL Exam – necessary for US and international Universities.
- TOEIC Preparation Module**
The TOEIC exam is the internationally accepted exam for English communication in a work environment.



Develop your career

- English for Business Module**
It is the right first step to learning about the language and English vocabulary of business, commerce and finance.
- English for Marketing Module**
The perfect way to start understanding the English language skills relevant to marketing, media, advertising and global communications.
- IT Module**
This module introduces students to network server management and software development that can lead to a Microsoft Certificate.

Extend your cultural horizons

- English Literature Module**
Study different genres of modern English literature. Learn related vocabulary and practise discussing literary ideas.
- English and Art Module**
This module looks at art history and art theory plus practical work and visits to London art galleries.
- English and Film Module**
If you are interested in current films and film-making techniques, this module gives you the language and vocabulary to extend your knowledge.

Kyung from Korea

"I needed more help on my English conversation. This extra hour helped me build confidence. As my course developed I changed my module to a Business module. My plan is to pass an LCCI exam and I will consider taking a Business Diploma next

Exams to open doors for you

You will be encouraged to progress to an internationally recognised exam

Exams for UK University Entry

• Pre IELTS • IELTS • IELTS Plus

IELTS at Malvern House
International English Testing System

IELTS

IELTS is the International English Language Testing System. It assesses a student's capability in communicating in English through listening, reading, writing and speaking. Over 500,000 tests are taken each year, mostly by those wishing to attend an English-taught course at university or college.

At Malvern House we offer IELTS at 3 different levels. This allows the student to target the score necessary for them. Each pre-entry student is tested and interviewed before commencing the course, making sure that they are placed in a class which exactly fits their needs.

Student No: Average 14-16 per class

Start Dates: Any Monday

External IELTS Exams take place weekly

Exams for your Business Career



The London Chamber of Commerce and Industry offers widely accepted international exams that are recognised by international corporations and universities. We offer the exams at 2 levels; Level 2 is for Upper-Intermediate students, and Level 3 is for Advanced and Proficiency students.

Length: 12 Week Course

Student No: Average 14-16

Start dates: any Monday

Exam fee: approx £50

Exams upon request

Exams for your English Development



UNIVERSITY of
CAMBRIDGE

Cambridge Certificates are acknowledged by employers and education institutions throughout the world. They therefore enhance your career prospects, offer a route to further study, as well as measuring your personal progress in English language. We offer the three most popular exams which are for students of upper-intermediate level and above.

FCE: First Certificate in English

Is for good intermediate and upper intermediate students.

You should already have a wide grasp of vocabulary, and be able to construct an argument and use appropriate communication styles for a variety of situations.

CAE: Certificate in Advanced English

Is for good upper intermediate and advanced students.

You will need to have the ability to use English effectively and perform confidently in social and professional situations, and in higher education.

CPE: Certificate of Proficiency in English

Is for proficient students.

You will now be approaching a standard of English similar to that of an educated native speaker.

Length: 12-14 Week Course

Student No: Average 14-16

Start dates: 2 January 2007,
26 March 2007 and 17 September 2007

Frequently Asked Questions

Which Exam is right for me ?

This depends on your current English language level and your future goals. Once we have assessed your English language level, we will have more idea of which course is suitable for you. Our Web Councillor, reception staff, or academic staff will be able to help you decide on the right pathway for your needs.

What are my future options?

Once you have passed an exam, a wide range of options are available for your future. You can continue onto the next level of exam, progress onto further study or use it to develop your career.

Am I likely to pass?

Malvern House has an excellent pass rate for students who sit exams. Your teacher will be able to advise you as to your chances of passing before you enter the exam.

Who can advise me?

Your teacher will advise you. You can have a personal interview with the Academic team about your progress at all stages. If you are overseas and want to book an Exam class you can email us for help and advice.



Natalia from Russia

"I passed the Cambridge Proficiency

Exam and I found it proved very valuable for my career when I returned to my country. It was a great benefit for my CV and future employers regarded it a great

Malvern House English Courses Synopsis

Course	Start Date	Study Centre	Min week	Max week	Entry test	Level required	No of levels	Note
General English (15 Hours)	Every Monday	All Centres (depends on level)	1	51	Placement Test	None	7 from Beginner to Proficiency	Very Beginner level students are advised to start at the beginning of each term
General English (20 Hours)	Every Monday	All Centres (depends on level)	1	51	Placement Test	Elementary and above	6 from Elementary to Proficiency	Combination of GE 15 hours plus chosen module
General English (25 Hours)	Every Monday	All Centres (depends on level)	1	51	Placement Test	Elementary and above	6 from Elementary to Proficiency	Combination of GE 15hours plus 2 chosen modules
English for Business (15 Hours)	Every Monday	Bloomsbury Centre	1	28	Placement Test	Upper Intermediate and above	2	This course can lead to a LCCI examination
EFB course (20 hours)	Every Monday	Bloomsbury Centre	1	51	Placement Test	Good Intermediate and above	2	Combination of EFB 15 hours plus chosen module
EFB course (25 hours)	Every Monday	Bloomsbury Centre	1	51	Placement Test	Good Intermediate and above	2	Combination of EFB (15hours) plus chosen modules
IELTS Exam (15 Hours)	Every Monday	Bloomsbury Centre	1	14	IELTS entry test	Good Intermediate and above	3	IELTS entry test consists of writing and oral
FCE exam course (15 hours)	Jan, Mar, Sep	Trafalgar Centre	10	14	FCE entry test	Good Intermediate and above	1	Taking an Exam at the end of the course is compulsory
CAE exam course (15 hours)	Jan, Mar, Sep	Bloomsbury Centre	10	14	CAE entry test	Good Upper Intermediate	1	Taking an Exam at the end of the course is compulsory
CPE exam course (15 hours)	Mar, Sep	Bloomsbury Centre	10	14	CPE entry test	Very Advanced	1	Taking an Exam at the end of the course is compulsory
Exam Courses (20 hours)	Exam course start date	Bloomsbury Centre Trafalgar Centre	10	14	Exam Entry Test	Good Intermediate and above	2	Combination of exam 15 hours plus chosen module
Exam Courses (25 hours)	Same as exam course start date	Bloomsbury Centre Trafalgar Centre	10	14	Exam Entry Test	Good Intermediate and above	2	Combination of exam 15 hours plus chosen modules

Business Programmes to progress your Career

If you are seeking a career in Business, it makes sense to learn the global language of commerce. Malvern House has specialist teachers for all our business classes and a variety of different options to suit your

1. Business Module

Add a **business module** to your General English course (For more details see Module page - p. D)

English for Business Module

It is the right first step to learning about the language and English vocabulary of business, commerce and finance.

English for Marketing Module

The perfect way to start understanding the English language skills relevant to marketing, media, advertising and global communications.

2. English for Business (Level 2)

This course is for Upper-Intermediate students with some practical business experience. Skills learnt include writing and understanding familiar business correspondence, giving complex instructions and presentation skills.

This course can lead to an LCCI (London Chamber of Commerce and Industry) examination.

3. English for Business (Level 3)

This course is for Advanced and Proficiency students with practical business experience. Skills gained will be sufficient for participating in all complex areas of business.

This course can lead to an LCCI examination.

4. A Malvern House Business Certificate

Our 12-week Business Certificate is an introduction to the basic principles of business theory and practice. Students will be introduced to Business, Quantitative Methods, Accounting, and Business Communication. This is the first step to taking either a Business or Tourism ABE Diploma. Please see The Malvern House Academy section for more information.

5. Work Experience and Internship

For students with Intermediate level English and above, we can combine your course with an internship in your chosen career field. Placements are voluntary but provide students with invaluable experience, both in English communication and UK work experience. Popular sectors include marketing, media, public relations and engineering. Internships can last between 4-18 weeks.

6. Sandwich Course with paid work experience

For students who wish to earn some money while gaining work experience, we can find paid hospitality placements around the UK. Students need to be good intermediate level and be happy to work anywhere in the UK. A programme of support and assessment is offered during the work placement and the course leads to the University of Cambridge International Examinations Certificate of Work Experience.



James McLaughlan
Pathway Course
Director

“I have extensive experience in teaching Business at all levels”



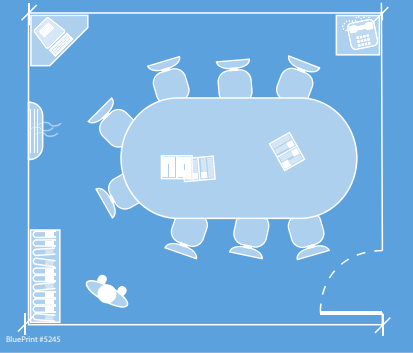
Says Edgar
from Venezuela

“I need Business English for my career in the Service sector back home. After my English had improved to Upper-Intermediate level I took a 12 week LCCI course and passed! My next step will be to progress to Certificate and maybe a Diploma.”

The Fast Track Programme

Intensive English for 20 hours for 2 or 4 weeks. Ideal for students who want to kick-start and accelerate their English language skills to make the most of their visit to London.

Fast Track Class



This intensive course is designed for students who need to improve their level of English in a concentrated time span. You will receive top teachers who can concentrate on how to enhance each aspect of your individual language skills



Andrea Merckel
Senior Academic Leader

“This course has been designed for students who are committed to study intensively. With only eight in a class he or she will receive more concentrated teacher attention with more chance to focus on those weaker aspects.

The tranquil class environment is geared to undistracted study. It will pay off in all cases with a speedy enhancement of the



- **8 students in a class**
- **20 hours a week of focused tuition**
- **Personal teacher**
- **Goal setting and progress reports**
- **Presentation skills**
- **London orientation programme**
- **Exclusive social programme**
- **Dedicated classroom**
- **Some one-to-one tuition included**