

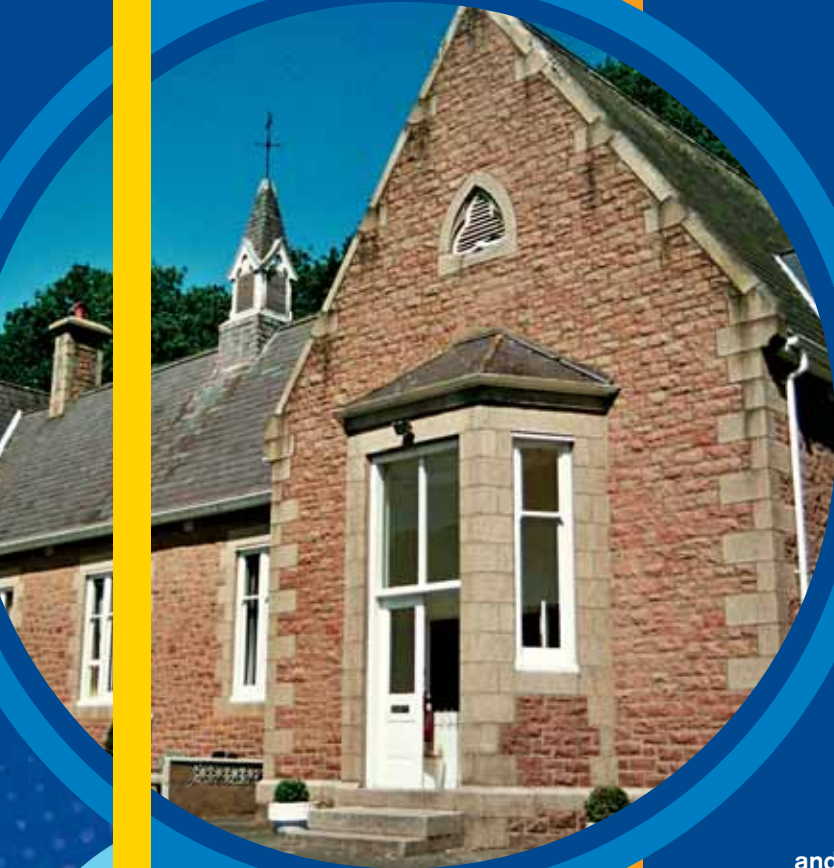


St Brelade's College

English Language School



Recognised by the British Council, member of Arels.



St Brelade's college was founded in Jersey in 1978 and caters for all ages and interests. It offers intensive courses throughout the year, short refresher courses, English for business and examination courses. The school also runs separate holiday courses for teenagers.

Our aim is to provide a professional quality of tuition in a friendly, welcoming atmosphere. This is achieved by well-motivated teachers, small classes and a lively social programme.



About the College

St Brelade's college is beautifully situated above the picturesque harbour of St Aubin, a ten minute drive along the bay from Jersey's main town, St Helier. The college remains open throughout the year and provides tuition in small groups, host family or hotel accommodation and a weekly programme of excursions and social activities.

Most of our students are from western Europe; a few from Japan and South America. Outside the summer months, there are rarely more than fifty adult students, attending short courses of group or individual tuition or longer courses leading to Cambridge examinations. All courses include two weekly excursions and two social activities e.g. a pub evening and an international dinner.

A special feature of our school is that nearly everything is included in the course fees; transfers, entry fees and transport to and from school.

During school holidays, we run separate courses for teenagers. Our summer school operates on three separate sites: **St Brelade's College** (for adults) **St Brelade's Junior School** (5 minutes from the main college, for ages 10-13) and **Highlands**

College in town (for teenagers). Teenage students receive tuition in the morning and a choice of excursions and sports in the afternoon. Surfing, windsurfing, bowling and tennis are among the most popular sports included in our course fees.

In order to make your learning as efficient as possible, students are taught in small groups (**maximum class size: 8 for adults and 12 for teenagers**). The average class is even smaller, so you really get the chance to practise your English in a friendly, relaxed atmosphere.

The School and its surroundings

St Brelade's college occupies a beautiful old granite school building, 200 metres above St Aubin's village with its attractive harbour, lined with hotels and restaurants.

The school has a large playground with a volleyball court and BBQ area, a student lounge offering a limited range of refreshments, and a small access centre with free access to the internet.

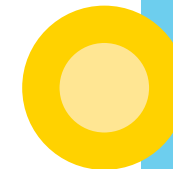
Staying in Jersey

Jersey is a small English tourist resort just off the coast of France. It measures about 70 Kilometres and has a population of about 90,000. Despite its closeness to France, Jersey has been British for a thousand years and the only language spoken is English.

Jersey is a very safe and beautiful island, popular with British tourists for its clean beaches and green countryside. Thanks to the Gulf Stream, its mild climate makes it attractive not just in summer, but in spring and autumn too.

Its reputation as a tourist resort and financial centre gives Jersey an international character. St Helier, the capital town, is full of high quality shops and restaurants, offering good food from all over the world - as well, of course, as the local fish.

Students can reach Jersey by boat from St Malo or by plane from Manchester, London City or London Gatwick. During the summer, there are direct flights from many European airports.



Teaching Methods

Small classes and excellent teachers

We believe that there is no substitute for small classes and qualified teachers. Nearly all our teachers, outside July and August, have been teaching at St Brelade's college for more than five years and have been selected from our Teacher Training Courses, which we run every year to prepare teachers for Trinity College Certificate and Diploma examinations. This means that our teachers are used to working together and share the same teaching goals.

The main emphasis of our teaching is on communication. Like most modern language schools, we employ a variety of methods and teaching materials to help students increase their conversational fluency.

Our classes are small enough for our teachers to adapt their methods and materials to the needs of each group.

A typical daily programme for a student at intermediate level:

9.00am - 10.30am

New grammar and vocabulary is introduced and practised.

11.00am - 12.30pm

There is more emphasis on listening comprehension, vocabulary and oral practice.

Afternoons

Lessons are usually based on a conversational topic which enables students to practise the language they know and acquire some additional vocabulary and idioms.

N.B. This pattern varies according to the needs and levels of the student:

Elementary Levels -

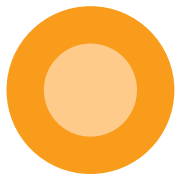
More use of the course book

Advanced Levels -

More variety in the choice of texts

Examination Courses -

More emphasis on written work



Adult Programme

What is included in your course

- If you have group tuition, the maximum class size is eight.
- All courses include two weekly afternoon excursions and two weekly social activities in the evenings. All transport and entry costs are included. (Summer holiday courses include three weekly afternoon excursions).
- If you are living in a host family, the school provides free transfers and free daily transport to and from school.

The first morning in school

New students assemble in the student lounge for a short introduction and test at 9.00am on Monday morning. They are placed in their new class, according to the results of their test, at 11.00am on the first morning.

Course books

The school has a wide choice of course books, readers, dictionaries and grammar books which can be bought or borrowed.

A typical week for an adult student (see next page)

- The timetable is the same for students attending intensive group courses, individual tuition or combination courses.
- For students attending refresher courses or summer holiday courses, lessons end at 12.30pm.
- For summer holiday courses, there is an extra excursion on a Wednesday afternoon.
- The afternoon timetable is arranged to allow time for excursions on Monday and Friday afternoon.



Adult Programme



Afternoon Timetable and Social Programme

Morning Programme

Monday - Friday	09.00 - 10.30	First Lesson
	11.00 - 12.30	Second Lesson

Afternoon Programme (an example of the social programme)

Monday	13.30 - 16.30	Choice of North Coast walk or excursion to Gorey Castle
Tuesday	13.30 - 15.30	Afternoon Lessons
Wednesday	13.30 - 15.30 Evening	Afternoon Lessons Welcome drinks at the Pierson Pub in the Royal Square
Thursday	13.30 - 15.30	Afternoon Lessons
Friday	13.00 - 14.30 14.30 - 16.30 19.30 - 21.30	Afternoon Lessons Excursion to Jersey Museum or Jersey Underground Hospital Barbecue at the school or dinner at a local pub



Course Guide



Name of course	Course Details	Time of year available
Refresher course	20 group lessons p.w. 2-3-4 weeks.	All year except July & August
Intensive course	30 group lessons p.w. 2-3-4 weeks.	All year except July & August
Combination course	20 group lessons p.w. plus 10 lessons p.w. of private tuition. For persons wishing to combine a general English course with a more specialised study in the subject of their choice e.g. English for Business, English for Law, Medical English	All year
Private Tuition 20 and 10 group lessons p.w.	20 lessons p.w. of private tuition, taking place in the mornings, plus 10 group lessons p.w., taking place in the afternoons. The afternoon classes provide a good way of socialising and obtaining extra conversational practice in a more relaxed atmosphere.	All year
Private Tuition 20 lessons p.w.	20 lessons p.w. individual tuition.	All year
Private Tuition 30 lessons p.w.	30 lessons p.w. individual tuition.	All year
Summer Holiday course	20 group lessons p.w. in a small group. 2-3-4 weeks.	July - August
Summer Intensive course	30 group lessons p.w. in a small group. 2-3-4 weeks	July - August
Cambridge Preparation course	20 or 30 group lessons p.w. in a small group	All year except July & August

Weekend Programme
(all courses)
Day trips to St Malo, Guernsey and Sark: £30.00



Longer English Courses

It is possible to attend the college for 3-9 months, in order to prepare for examinations, or simply to achieve a good working knowledge of English. In this case, the best time to start your course is the period between September and June, when the school is small and students are assured of the maximum individual attention.

Cambridge and IELTS Examinations

St Brelade's College specialises in preparing students for Cambridge and IELTS examinations. The Cambridge examinations take place in June and December at the following levels:

The Cambridge First Certificate
Cambridge Advanced
Cambridge Proficiency

The First Certificate examination is the most widely accepted proof of a student's ability to handle English in everyday situations. The Advanced and Proficiency examinations are proof of the higher level of oral and written comprehension required of students wishing to attend British universities.

The advantage of these examinations from the student's viewpoint is that the course requirements are very clearly defined and the student is assured of a balanced programme of listening and reading comprehension, oral and written work. However, students wishing to prepare for entry to British universities may prefer to study for the IELTS examinations which are held many times a year and are specifically designed for future University students.



How long do you need to study for these examinations?

This question depends on your language background; in other words, how long you have studied the language and how similar your mother tongue is to English. Experience suggests that the average German or Swedish student needs three months for the Cambridge First Certificate examination whereas students whose mother tongue is Japanese or Arabic may need nine months or a year. Generally speaking, the closer your native language is to English the less time it takes to learn the language.

Once you reach an advanced level in English, the problems are the same for everyone!

English has an enormous amount of idioms and vocabulary that need to be mastered by the advanced student. Students wishing to prepare for the IELTS or Proficiency examinations are advised to start their course in January or September and study for six to nine months.

Some statistics...

Student Data	Adults		Teenagers	
From what countries?	Germany	33%	Germany	41%
	Switzerland	25%	France	36%
	Poland	11%	Spain	7%
	France	9%	Italy	4%
	Others	22%	Others	12%
Average age	18-25	26%	10-14	48%
	26-35	24%	14-18	52%
	35-45	19%		
	over 45	31%		
Average number of students	November - Easter	20	For two weeks in Feb	20
	April - June	30	Easter Holiday courses	60
	July, August	40	May to June	20-60
			July, August	125-200
			For two weeks in Oct	15
Average class size	July, August	7	July, August	10
	The rest of the year	5-6	The rest of the year	7-8

Accommodation



in a hotel, in a family, self-catering...

If you want to live 200 metres from the school, then a hotel is the best solution.

The village of St. Aubin is probably the most popular spot in Jersey for hotels and restaurants, and we can organise your hotel accommodation for £25-£60 per day, according to season and category of hotel. Alternatively, you may wish to telephone Jersey Tourism's accommodation service and make a direct booking by credit card. (Tel: 0044-1534-500888.)

Self-catering is more difficult to obtain and surprisingly expensive; English families often book their self-catering holidays in Jersey one year in advance, so it is almost impossible to find an apartment in July or August.

Many adult students choose to stay in host family accommodation, where they receive breakfast, dinner and a packed lunch to eat at the school. The host family is also responsible for transfers on arrival and departure, while the college provides free daily transport to and from the school.

All the host families receive regular visits from our accommodation officer and are expected to provide a decent standard of comfort and hospitality. Outside the summer months, all our host families are located within easy travelling distance from the school. However, in July and August, good host families are more difficult to obtain and not all our families are so conveniently situated.

*In order to ensure a reasonable standard during the summer months, we have decided to make **May 31st** our final booking deadline; after this date, adults wishing to attend courses in July and August must accept hotel accommodation.*



Courses for Young Learners (ages 10-18)

Holiday Courses - 20 lessons plus afternoon activities

Intensive Courses - 30 lessons plus two afternoon activities

Course Period	Starting	Weeks	Remarks
Easter	Any Monday (arriving in your host family on a Sunday)	2-3	At this time of year we recommend intensive courses
February, May, October		1-2	
June, July, August	Every 2 weeks (arriving on a Sunday)	2-3-4	The holiday programme includes a daily choice of sports & activities

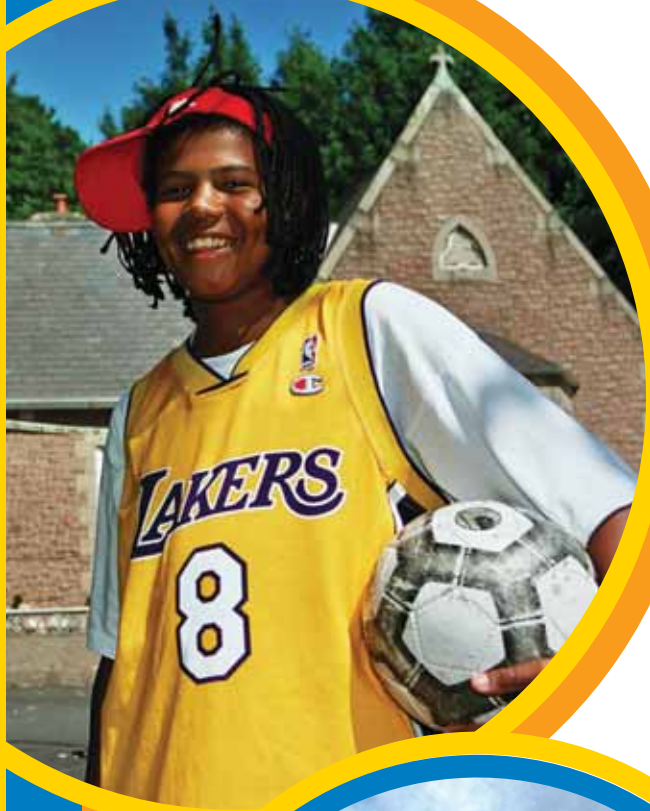
The main difference between teenage and adult learners is that most school pupils attend a language school in order to supplement the English they have learnt at school; in other words, to consolidate their knowledge of grammar and, above all, to speak the language. Teenage classes are therefore less dependent on course books, and teachers make frequent use of pictures, magazines and language games to motivate the students to practise the language.

Lessons run from 9.00am to 12.30pm Monday to Friday, followed by supervised afternoon activities. The choice of activities is much greater in the summer and includes watersports, football and tennis.

Students following intensive courses have additional lessons in the afternoon in small groups (see adult programme).

During the summer months, younger pupils (ages 10-13) attend our junior school, which is not far from the main college. Here the morning classes are adapted to a younger age group and a separate activities programme is arranged in the afternoons, supervised by the class teachers. During July and August, our teenage classes are held at Highlands College on the outskirts of St. Helier. This is the local college of further education, with well-equipped classrooms, cafeteria and spacious grounds.





What is included in your course

- Tuition in small groups (12 max)
- A wide range of exciting activities and excursions - all transport and entry fees are included - plus a weekly barbecue.
- All meals (if you are living in a host family) plus daily transport to and from school - and transfers on arrival and departure.

Activity Programme

Day	Summer Programme	Rest of Year
Monday	Choice of excursion to Jersey Zoo or surfing, volleyball and minigolf at St Ouen or bowling and beach.	Cinema or Excursion
Tuesday	Choice of windsurfing, canoeing or speedboating at St Brelade or football, tennis and swimming or bowling and beach. Evening: Cinema (£2.00)	Bowling
Wednesday	Choice of excursion to German Hospital or surfing and volleyball or football, tennis and swimming. Evening: Teenage Disco (£4.00)	Excursion to Jersey Zoo
Thursday	Choice of windsurfing and canoeing or North Coast walk or bowling and beach	Swimming or Volleyball
Friday	Shopping and Evening barbecue	Shopping & Barbecue



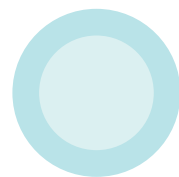
Family Accommodation

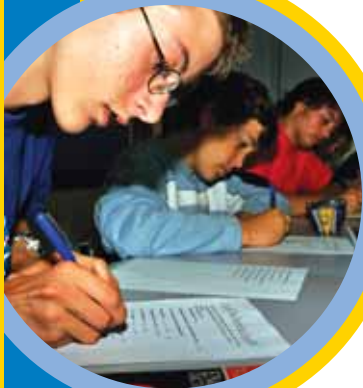


As we fully appreciate, staying with a good host family plays an important part in the success of a student's stay in a foreign country. This is why our families receive regular visits from our accommodation officer and, on the rare occasions when there is felt to be a problem, we are prepared to make a change of family at short notice. The families provide students with breakfast, dinner and a picnic lunch to take to school. We normally place two students in each family - of a different nationality so that they can speak English together.

Some tips for teenagers - and their parents!

- Many of our best host families live in St. Brelade or other parts of the Island. If you insist on staying in town you may not get such a good choice of family.
- Don't book an intensive course in the summer and then - once you arrive in Jersey- realize that you are missing most of the afternoon activities and persuade your parents to change your course. Parents, be realistic! Don't choose intensive courses for your children in summer unless they are really motivated.
- Be home at the following times!
10.00pm (age 14) 10.30pm (age 15) 11.00pm (age 16). If you stay out too late you may lose a good host family.





Additional Information

How to enrol

Please send your application to us by post or fax before sending any payment. You can also use our internet website: www.st-brelades-college.co.uk. We will send you by return a confirmation and invoice.

Payment of fees

As soon as you receive our confirmation, please send us your deposit of £100. The remaining fees are payable four weeks before the start of your course.

Cancellation fees

The deposit is not refundable. Remaining course fees will be refunded except in the case of private tuition cancelled at short notice.

Medical treatment

The local hospital provides free medical treatment in case of serious illness or accidents. However, you are advised to take out private insurance if you wish to be covered for all eventualities.

Host Family Details

We will send you the details of your host family two weeks before the start of your course.

Arrival and Departure

You are expected to arrive in your host family on a Sunday and depart on a Saturday. (If necessary, you can arrive on a Saturday **but you must leave your host family on Saturday and not Sunday.**)

Arrival Details

Your host family will meet you on your arrival at the harbour or airport. To avoid misunderstandings, please inform the school - and not the family - of your arrival details, at least two weeks before the start of your course.

Payment Details

You are welcome to pay by credit card or direct transfer. **Credit card payments** can be arranged by telephoning the school before the start of your course. If you prefer to pay by **Bank Transfer**, please give the following information to your bank:

Name of Student

Invoice Number

Name of Account: St Brelade's College

Account Number: 46001956

Natwest Bank,
PO Box 11,
16 Library Place,
St Helier
JE4 8NH

Sort Code: 60-12-03

Swift Code: RBOSJESH

Iban Code: GB66NWBK601203 - 46001956

St Brelade's College
English Language School



Mont Les Vaux, St Brelade, Jersey JE3 8AF, Channel Islands
Tel: 0044 1534 741305 Fax: 0044 1534 741159 Email: sbc@itl.net
www.st-brelades-college.co.uk